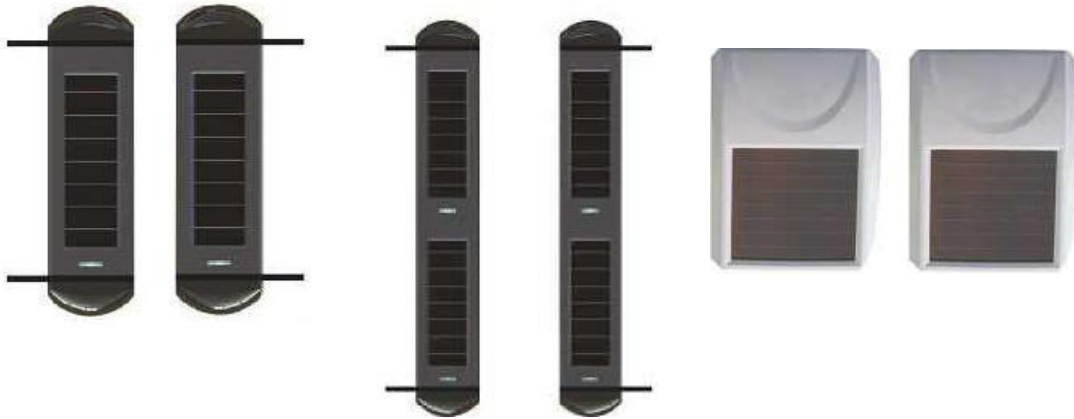


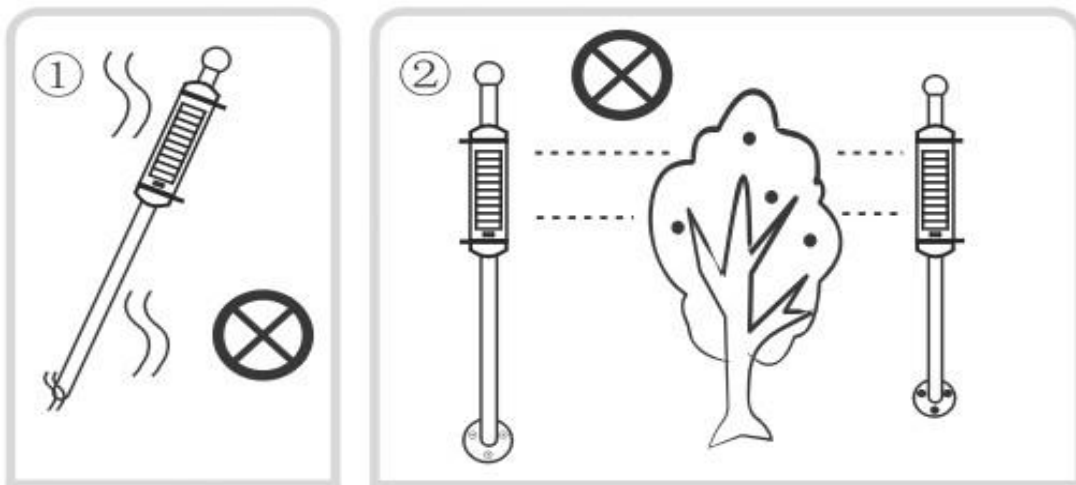
Solar Photo-Beam Installation Precautions



PLEASE READ INSTRUCTION BEFORE INSTALLATION !!!

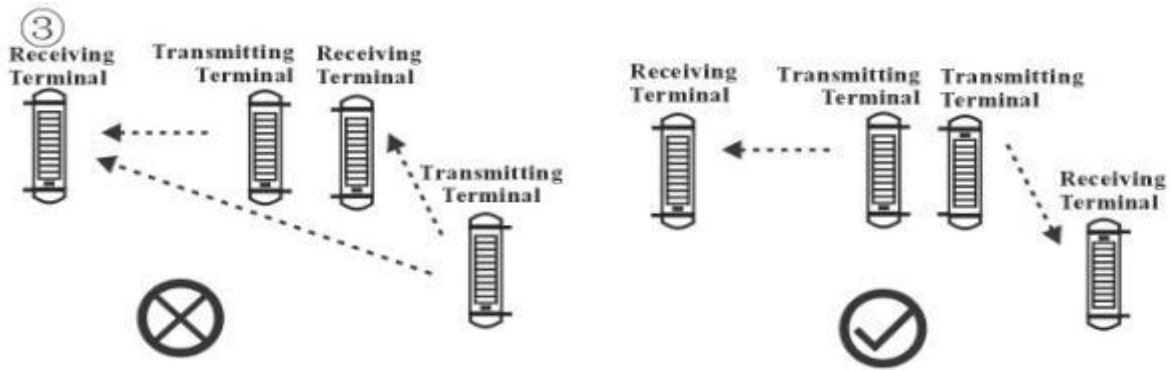
1. Download Lux Meter from App Store(Iphone) or Play Store(Android)

Required minimum of 200Lux

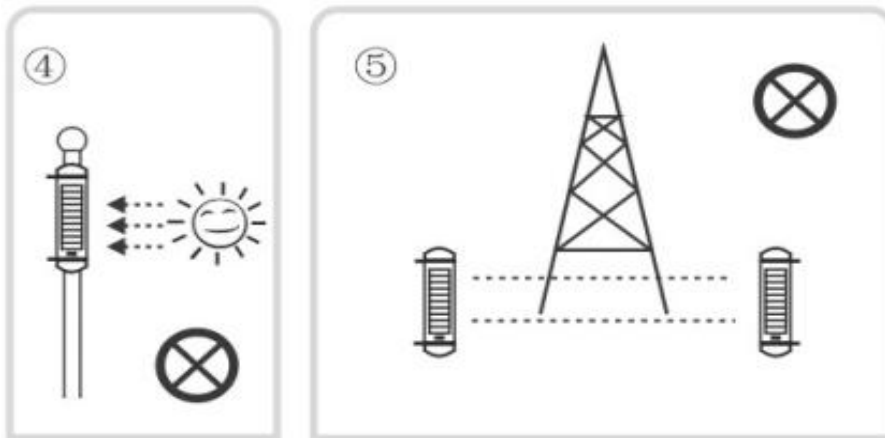


Note 1 : Never install at an inclined angle

Note 2 : Make sure that there is no obstacle between the transmitting terminal and the receiveing terminal



Note 3 : Multiple solar photo-beam shall be installed for long distance, refer picture above for installation instruction



Note 4 : Keep the solar-photobeam holeex-posed to direct sunlight.

Note 5 : The high-voltage tower may influence the wireless performance